

# United Kingdom



**INTERNATIONAL  
NOMINEE HIGH-RISE  
ARCHITECTURE**

Bridges Wharf  
by Weston Homes PLC



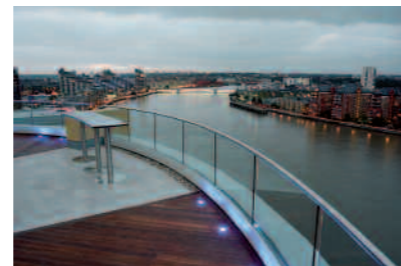
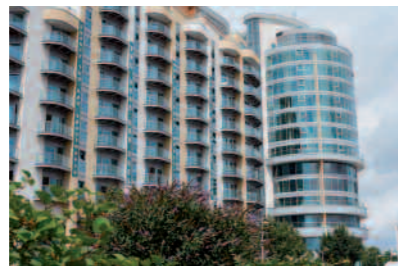
**HIGH-RISE  
ARCHITECTURE UK**

Bridges Wharf  
by Weston Homes PLC



**BEST APARTMENT  
LONDON**

Altura Penthouse,  
Bridges Wharf  
by Weston Homes PLC



Founded in 1987 Weston Homes Plc, part of the Weston Group, is an industry leader in the regeneration of brownfield sites and its new build portfolio includes large high-rise developments in London's Docklands. One of the firm's flagship projects in Battersea typifies the firm's ambition. Bridges Wharf comprises 258 one and two-bedroom apartments, plus three-bedroom duplex apartments, ranging from 41m<sup>2</sup> to 174m<sup>2</sup> – most with river views and balconies – and five rooftop penthouses in three glass-fronted, tiered towers of 11 to 15 storeys.

Architecturally, Weston Homes took pains to ensure that Bridges Wharf was scaled in accordance with other, lower riverside developments in the locale. Functional points of interest include attractive terraces and balconies and double-height colonnades above entrance doors – these ensure that the riverside walk beside the buildings is utilised, and provide covered outdoor areas where commercial activities can continue.

More technical construction features include a concrete frame that eliminated the need for additional structural linings: this ensures fire integrity, and also enabled the creation of attractive radii corners on slabs, terraces and curved roofs at Bridges Wharf. Small ceiling voids keep storey heights low and reduced concrete usage; pressure relief holes at basement level meant that tensile piles and related reinforcements were unnecessary.

Bridges Wharf also utilises an innovative 'cassette wall system' that weighs only 44kg per m<sup>2</sup>, which compares favourably with blockwork cavity walling averaging 250kg to 300kg per m<sup>2</sup>. Combine these figures with the fact that less energy is used in its construction, and the cassette system is approximately 85% more efficient. Stainless steel balustrading for apartments allows for uninterrupted views and glazing is heat-soak toughened – this prevents heat stress and reduces the risk of glass failure.



Designed as a trophy property within Bridges Wharf, the award-winning Altura Penthouse occupies the 12th floor of the Altura Tower; a striking tower that houses Hotel Verta, the first five-star hotel south of the Thames operated by the renowned von Essen group. This residence offers the ultimate in lateral riverside living over 198m<sup>2</sup>, with finishings of the highest standard and wonderful views of the Thames and Central London from a landscaped terrace and unique winter gardens.

Visitors who step through the penthouse's striking lobby doors in American walnut will immediately be struck by the polished marble floors of the living room with its vaulted ceiling, dining and kitchen areas. Opulent fixtures

are evident throughout, and an open-plan kitchen showcases high-gloss finished wall and base units, granite work surfaces and designer appliances that include a Neff wine fridge.

Two opulent bedroom suites possess integrated sound systems and fitted wardrobes, whilst the master bedroom boasts a 50" plasma television and an impressive en suite with an air/water massage bath and steam shower room. The penthouse also includes comfort cooling/heating to all rooms, access to the Falconbrook Spa, use of all hotel amenities and three secure, allocated underground parking spaces. Twenty-four concierge services are provided, and security systems include CCTV, a passive infra-red alarm and video entry system.



**INTERNATIONAL  
NOMINEE HIGH-RISE  
ARCHITECTURE**

Bridges Wharf  
by Weston Homes PLC



**HIGH-RISE  
ARCHITECTURE UK**

Bridges Wharf  
by Weston Homes PLC



**BEST APARTMENT  
LONDON**

Altura Penthouse,  
Bridges Wharf  
by Weston Homes PLC

## Weston Homes Plc

Weston Group Business Centre,  
Parsonage Road, Takely,  
Essex, CM22 6PU. UK  
t: +44 (0)1279 873333  
f: +44 (0)1279 873378  
e: info@weston-homes.com  
w: www.weston-homes.com